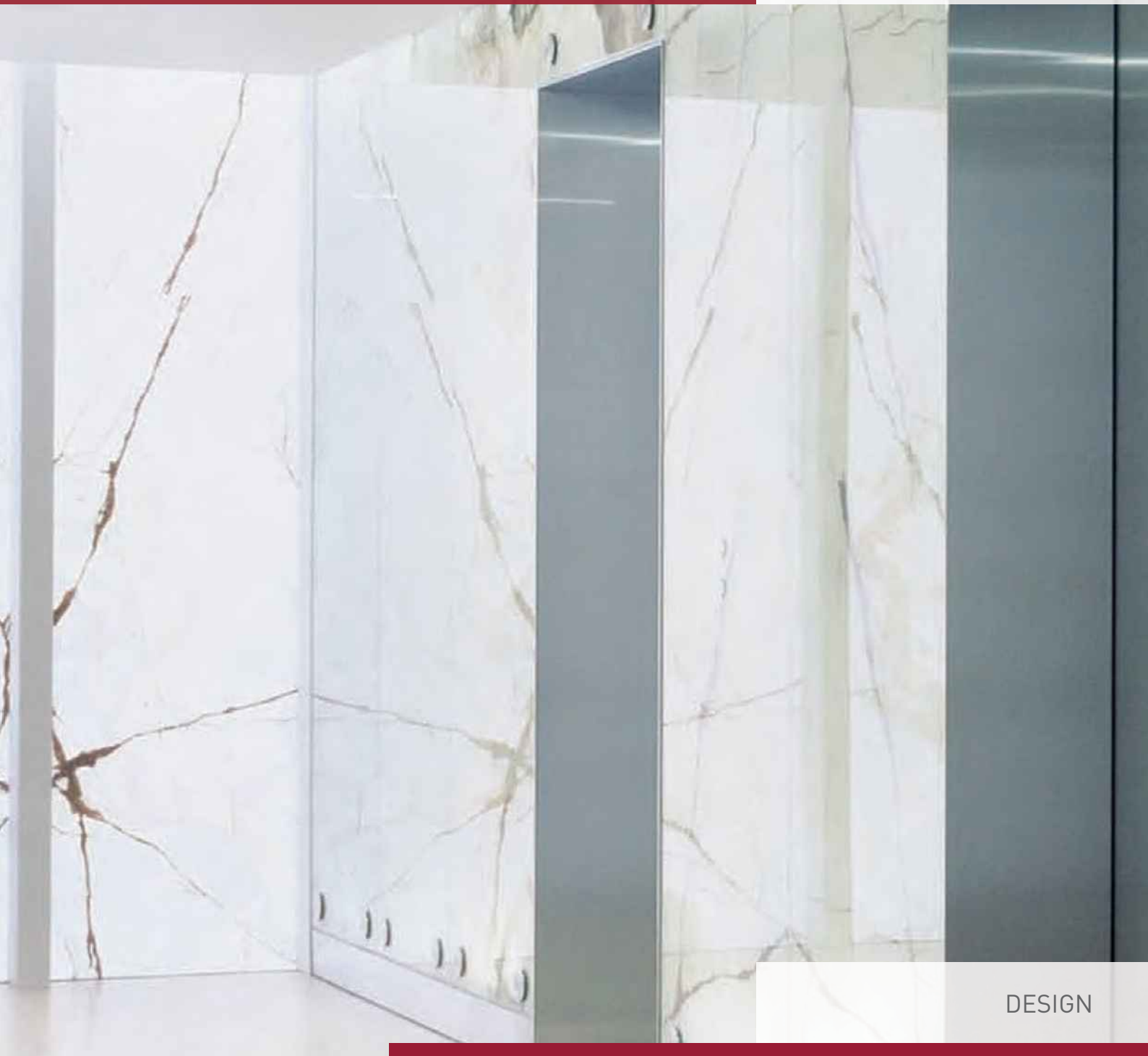


FLOATSTONE

The composite glass
with a layer
of natural stone



DESIGN

FLOATSTONE

The finest combination of glass and stone

Description

The FLOATSTONE line is ideal for fine architectural designs – equally on facades and in foyers or in applications for residential property, for instance in bathrooms and kitchens. This innovative composite glass contains a thin layer of natural stone that reveals its unique filigree beauty through the glass finish.

Walls and internal partitions made of FLOATSTONE can be backlit depending on the type of stone, they are lightweight, as opposed to pure stone, weatherproof and resistant to dirt and create a sumptuous atmosphere, revealing the appearance of the stone in colour, translucence and depth effect at its most beautiful

Applications

FLOATSTONE, the original idea for exclusive residential or luxury construction projects.



FLOATSTONE

Range



FLOATSTONE ONYX is a greenish-yellow natural stone, frequently with large areas of brown veining.



FLOATSTONE AZUL IMPERIAL is a blue quartzite with a green-blue rippled structure made of cyanite and dumortierite.



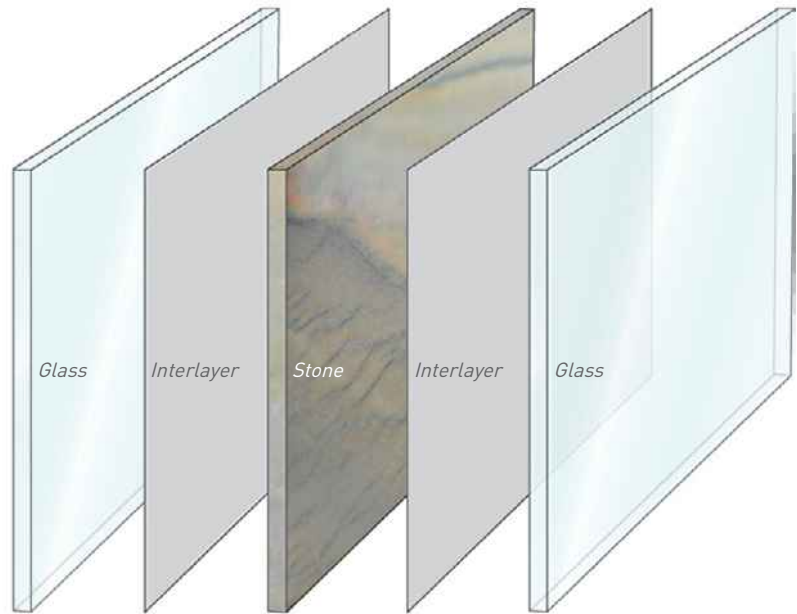
FLOATSTONE ESTREMOZ ROSE is a reddish-brown veined natural stone with an underlying colour between clear and ivory.



FLOATSTONE STATUARIO VENATO is a fine-grained, almost white natural stone with light grey pattern.



FLOATSTONE STAR GALAXY is a black natural stone interspersed with reflective bronzite.



Advantages

FLOATSTONE is a laminated glass manufactured in accordance with DIN EN ISO 12543 and includes edge protection.

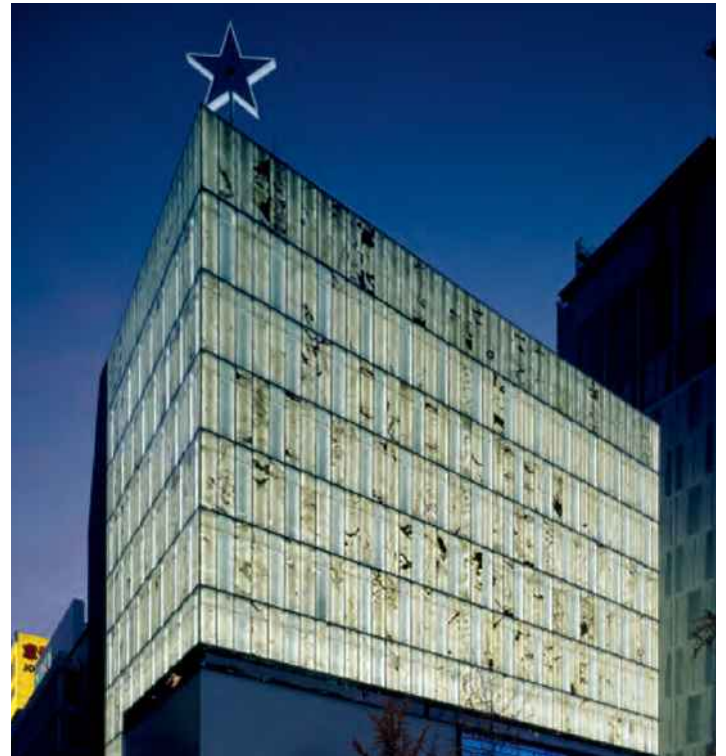
In our research centers we carried out exhaustive quality and particularly aging tests with all approved types of stone over a development period of four years.

For this reason Saint-Gobain is the first and in fact the only provider currently capable of offering its customers a glass-stone composite complete with a manufacturer's guarantee.

Dimensions

FLOATSTONE must be fully framed. The 3 to 10 mm thick natural stone layer is embedded between two sheets of glass made of SECURIT, PLANIDUR, SGG PLANILUX or SGG DIAMANT. the minimum thickness of each sheet of glass is 4 mm.

FLOATSTONE



Night and day

The “Etoile Shinsaibashi” in Osaka, Japan is the first FLOATSTONE project to be completed. Once illuminated, the special effect provided by the combination of natural stone and glass is revealed in all its unique beauty.

Photo credits :

Title photo, 2.- 4.: “Etoile Shinsaibashi” building in Osaka, Japan owned by an affiliate of LVMH Moët Hennessy Louis Vuitton Japan K.K., B1 & 2nd floor: Boutiques of Dior, Fendi and Chaumet, 3rd & 9th floor: offices, opening: end 2004, Copyright: Daici ano; Architectes: Kengo Kuma & Associates. THELA – Photographe : Vogelsänger Studios, Composition Graphodata AG.

All the brands quoted in this brochure are either registered or trademarked by Saint-Gobain.



For Glassolutions contact details by country, please refer to the last page.

www.glassolutions.eu

Distributor