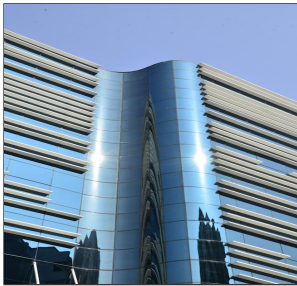


TITLE
SGG EVO

SUBTITLE
Solar Control Glass- Green Building Glass - SGG EVO



DESCRIPTION

SGG Evo is a solar control glass that is energy efficient and has thermal insulation properties in a single glazing application. This GREEN BUILDING GLASS is an ideal choice for Leed rating/ ECBC compliance.

SGG Evo is manufactured by deposition of specialized metallic nitrides by magnetically enhanced nano technology based cathodic sputtering under vacuum conditions onto clear or body- tinted glass.

SGG Evo is designed to be in conformance with the requirements of green buildings and ECBC (BEE) regulations. It is the ideal choice for buildings that are going in for the LEED/ IGBC rating and TERI- GRIHA rating.

RANGE

SGG Evo Clear Cosmos (ET 125)

SGG Evo Green Aura (ET 425)

SGG Evo Orion Blue (ET 725)

PRODUCT APPLICATION

Structural glazing, facade glazing, bolted systems, curtain walling and fenestration applications

Single glazing, insulated glazing units, double glazed units, laminated, heat treated and bent glazing units

ADVANTAGE

High performance in single glazing

Available in lighter shades and hues

High level of energy- efficiency

Helps maintain clear vision both during day & night